

St Martin's East Woodhay CE (Aided) Primary School



Pupil Premium Strategy
March 2019

What is Pupil Premium?

- The Pupil Premium is an allocation of funds from the government to support children's learning and pastoral needs. Every child in receipt of free school meals (over the previous six years) and/or children of armed service personnel (over the previous six years) and/or children who fulfil criteria as a 'looked after' child or 'post looked after' child receives an allocation of funds. The Headteacher and Governing Body then decide how the money is used to support the children's education.
- All schools are required to report on the amount of funding received, how this is being used and the impact of the work undertaken.

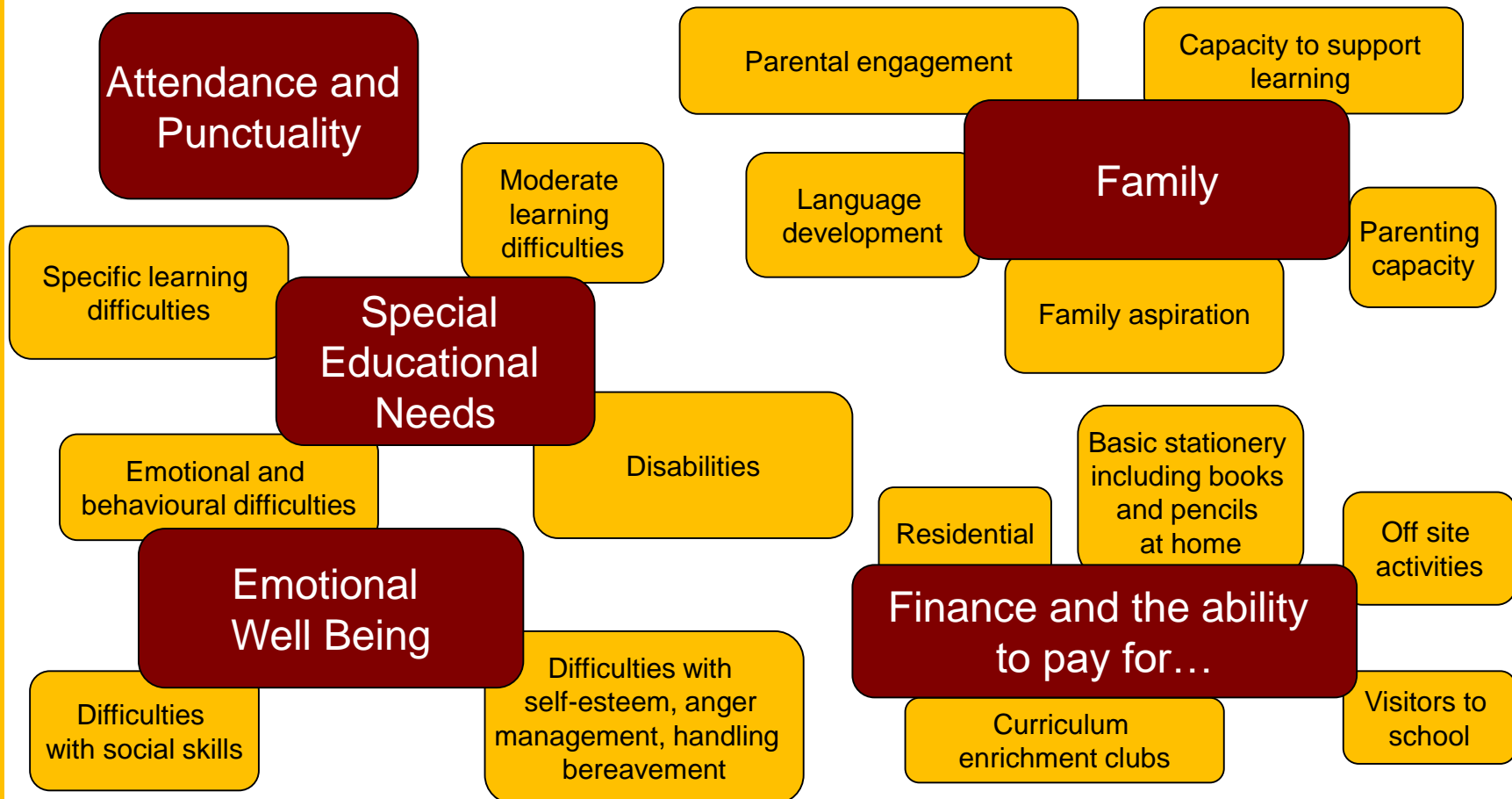
How much is the Pupil Premium worth?

	Pupil Premium Per Child 1 st April 2018 to 31 st March 2019	Pupil Premium Per Child 1 st April 2019 to 31 st March 2020
FSM Ever 6	£1,320	£1,320
Service Ever 6	£300	£300
Post LAC	£2,300	£2,300
Total Income for St Martin's	£19, 040	£15, 120 (predicted)

Principles

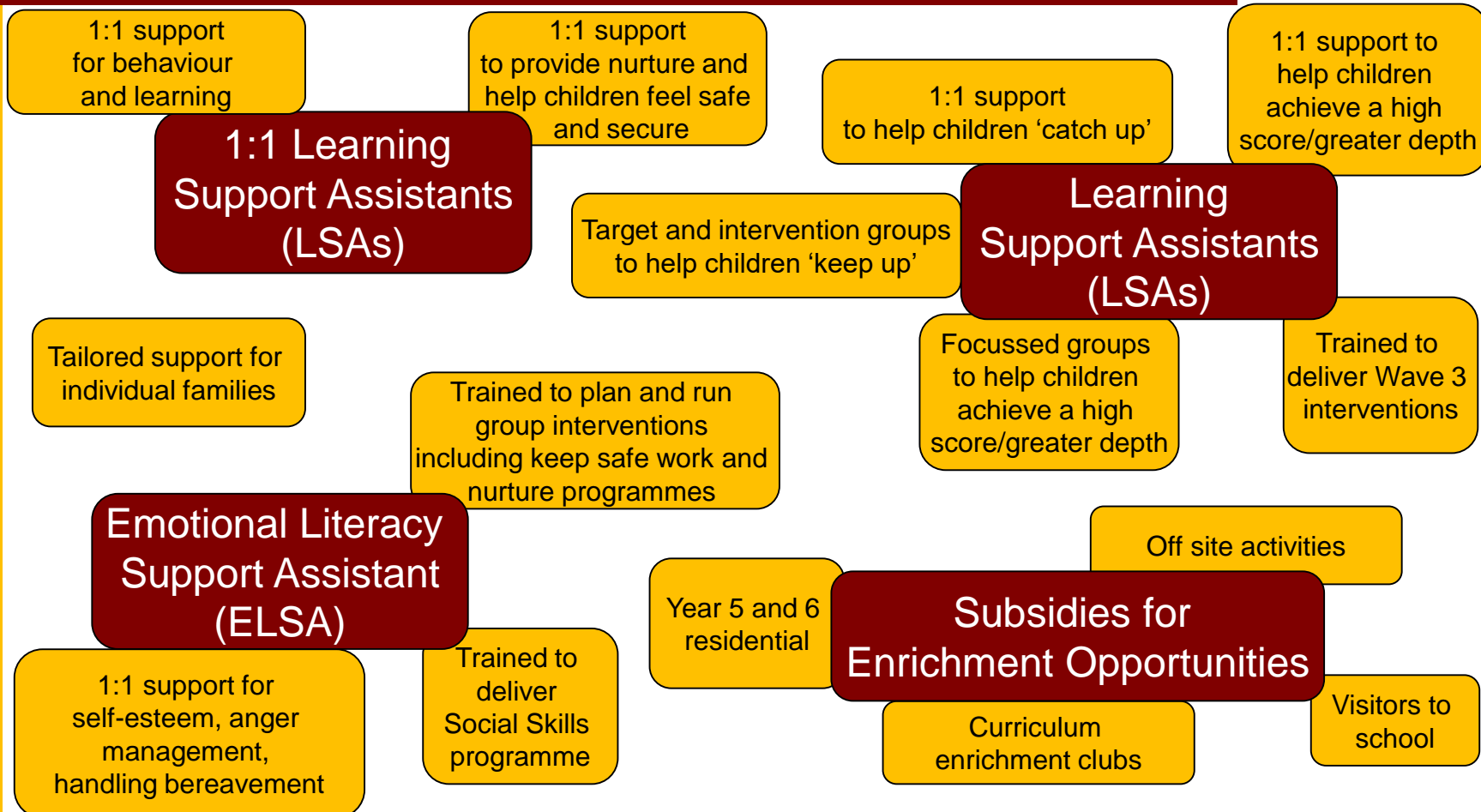
- At St Martin's East Woodhay CE (Aided) Primary School, we believe:
 - *that all children have a right to high quality teaching and learning that meets their individual needs;
 - *that all children have the right to learn in a nurturing environment where they feel a sense of belonging, safety and security.
- We understand that every child is an individual and we will consider the specific needs of every child, including any barriers to learning, when deciding on the type(s) and level of support and intervention to be allocated to that child.

Possible Barriers to Learning



Please cross reference our
'Strategies to Close the Attainment Gap' model.

Possible Provision



Evaluating Impact 2018 - 2019

Intervention	Details	School Focus	Cost 2018 - 2019	Impact	Evidence	Sustainability/ Next Steps
Whole school staff training	*Whole school participation in the 'attachment friendly schools' research project.	*SDP 18/19 Priority 2.3	£234 (course) £2,000 (release costs)	*All staff understand the emotional needs of children and strategies that can be used to support them.	*Pupil progress and attainment data *Pupil progress meetings *HT monitoring	Information to be disseminated to all new staff as part of induction.
Whole school staff training	*Staff INSET on supporting children who have experienced trauma led by Sally Miles, play therapist.	*SDP 18/19 Priority 2.3	£500 (to enable part time staff to attend)	*All staff understand the emotional needs of children and strategies that can be used to support them.	*Pupil progress and attainment data *Pupil progress meetings *HT monitoring	Information to be disseminated to all new staff as part of induction.
Whole school staff training	*Staff INSET on 'when the adult changes, everything changes', led by Pivotal Education.	*SDP 18/19 Priority 2.3	£250 (course) £1,000 (to enable part time staff to attend)	*All staff understand the emotional needs of children and strategies that can be used to support them.	*Pupil progress and attainment data *Pupil progress meetings *HT monitoring	Information to be disseminated to all new staff as part of induction.

Evaluating Impact 2018 - 2019

Intervention	Details	School Focus	Cost 2018 - 2019	Impact	Evidence	Sustainability/ Next Steps
Individual staff training for teachers and LSAs working with specific children	*Understanding behaviour and achieving positive change - 2 day course.	*SDP 18/19 Priority 2.3	£625 (course) £1000 (release costs)	*Children are supported to be in school and access learning. personalised to their needs.	*SENCO reports *Progress and attainment data *Pupil Progress meetings	To continue as necessary.
Individual staff training for LSAs working with specific children	*Understanding Autism and managing the behaviour of autistic children – 3 day course.	*SDP 18/19 Priority 2.3	£120 (course) £150 (release costs)	*Children are supported to be in school and access learning. personalised to their needs.	*SENCO reports *Progress and attainment data *Pupil Progress meetings	To continue as necessary.
Individual staff training for teachers and LSAs working with specific children	*Visits to the Harewood centre to observe strategies used there.	*SDP 18/19 Priority 2.3	£1000 (release costs)	*Children are supported to be in school and access learning. personalised to their needs.	*SENCO reports *Progress and attainment data *Pupil Progress meetings	To continue as necessary.

Evaluating Impact 2018 - 2019

Intervention	Details	School Focus	Cost 2018 - 2019	Impact	Evidence	Sustainability/ Next Steps
ELSA	*Individual support for children identified as needing emotional support including young carers, social skills, anger management and bereavement.	*SDP 18/19 Priority 2.3, 3.1	£1,500	*A calm and focussed learning environment. *Children's emotional well being enables them to access learning and make expected progress.	*Pupil progress and attainment data *Pupil progress meetings *ELSA reports	To continue.
1:1 LSA Support	For the academic year 2018 – 2019, 1:1 LSA support was provided for 3 children with significant emotional and behavioural needs in lesson time and for 1 child at lunchtime (part of the funding for this comes from the SEN budget).	*SDP 18/19 Priority 2.3, 3.1	£7,500	*Children are supported to be in school and access learning personalised to their needs.	*SENCO reports *PLPs *Progress and attainment data *Pupil Progress meetings	To continue as necessary.

Evaluating Impact 2018 - 2019

Intervention	Details	School Focus	Cost 2018 - 2019	Impact	Evidence	Sustainability/ Next Steps
Social Skills	*Small group weekly session aimed at developing social skills.	*SDP 18/19 Priority 2.3	£250	*Children's social skills enable them to access learning and make expected progress.	*Pupil progress and attainment data *Pupil progress meetings *Social skills reports	To continue.
Target and Intervention	*Small group support aimed at children needing to 'keep up' in order to meet Age-Related Expectations.	*SDP 18/19 Priority 4.1	£500	*The majority of children make accelerated progress as a result of the intervention.	*Pupil progress and attainment data *Pupil progress meetings	To continue.
Wave 3	*Individual support programmes for children with specific learning needs (usually on the SEN register).	*SDP 18/19 Priority 4.1	£750	*The majority of children make accelerated progress as a result of the intervention.	*SENCO monitoring of interventions	To continue.

Evaluating Impact 2018 - 2019

Intervention	Details	School Focus	Cost 2018 - 2019	Impact	Evidence	Sustainability/ Next Steps
Off site activities and visitors to school	*Subsidy for off-site activities and visitors to school.	*SDP 18/19 Priority 2.3	£500	*Children are excited by the curriculum, thereby improving their engagement and rates of progress.	*Curriculum enrichment reports *Pupil conferencing	To continue.
Curriculum enrichment	*Subsidy for Year 5 and 6 residential.	*SDP 18/19 Priority 2.3	£1,200	*Children are given opportunities that otherwise they would not have access to.	*Pupil conferencing	To continue.

Attainment

- There are 7 children at St Martin's East Woodhay CE (Aided) Primary School who are entitled to the Pupil Premium.
- In order to maintain confidentiality the attainment of all children is included as one group in the following data as opposed to splitting the data into individual year groups.
- Please see the St Martin's Assessment Policy for an explanation of our assessment system.

Attainment - Reading

	Target	Autumn 1	Autumn 2	Spring	Summer
Working Towards ARE	3	2	4		
Working Close To ARE	0	0	0		
Working At ARE	3	5	1		
Working At Greater Depth Within ARE	1	0	2		

- Challenging targets based on prior attainment and FFT predictions are set for all children in September.
- Currently one child entitled to pupil premium is not on track to achieve their target and one child is on track to exceed their target.

Attainment - Writing

	Target	Autumn 1	Autumn 2	Spring	Summer
Working Towards ARE	5	5	5		
Working Close To ARE	0	1	1		
Working At ARE	2	0	0		
Working At Greater Depth Within ARE	0	1	1		

- Challenging targets based on prior attainment and FFT predictions are set for all children in September.
- Currently one child entitled to pupil premium is not on track to achieve their targets and one child is on track to exceed their target in writing.

Attainment - Maths

	Target	Autumn 1	Autumn 2	Spring	Summer
Working Towards ARE	2	3	3		
Working Close To ARE	0	1	1		
Working At ARE	4	2	2		
Working At Greater Depth Within ARE	1	1	1		

- Challenging targets based on prior attainment and FFT predictions are set for all children in September.
- Currently two children entitled to pupil premium are not on track to achieve their targets in maths.

Future Plans 2019 - 2020

Intervention	Details	School Focus	Cost 2019 – 2020	Expected Impact
ELSA	*Individual support for children identified as needing emotional support including young carers, social skills, anger management and bereavement.	*SDP 18/19 Priority 2.3, 3.1	£2000	*A calm and focussed learning environment. *Children's emotional well being enables them to access learning and make expected progress.
Social Skills	*Small group weekly session aimed at developing social skills.	*SDP 18/19 Priority 2.3	£300	*Children's social skills enable them to access learning and make expected progress.
Target and Intervention	*Small group support aimed at children needing to 'keep up' in order to meet Age-Related Expectations.	*SDP 18/19 Priority 4.1	£500	*Increase in percentage of children meeting Age-Related Expectations.

Future Plans 2019 - 2020

Intervention	Details	School Focus	Cost 2019 – 2020	Expected Impact
Wave 3	*Individual support programmes for children with specific learning needs (usually on the SEN register).	*SDP 18/19 Priority 4.1	£1000	*The majority of children make accelerated progress as a result of the intervention.
1:1 LSA support	*1:1 LSA support for children with significant emotional and behavioural needs.	*SDP 18/19 Priority 2.3, 3.1	£6000	*Children are supported to be in school and access learning personalised to their needs.
Off site activities and visitors to school	*Subsidy for off site activities and visitors to school.	*SDP 18/19 Priority 2.3	£1000	*Children are excited by the curriculum, thereby improving their engagement and rates of progress.
Curriculum enrichment	*Subsidy for Year 5 and 6 residential.	*SDP 18/19 Priority 2.3	£1200	*Children are given opportunities that otherwise they would not have access to.
Staff training	*Attachment friendly school training. *Staff training to meet the needs of specific children.	*SDP 18/19 Priority 2.3	£3000	*All staff understand the emotional needs of children and strategies that can be used to support them.

Further Information

All matters relating to the use of Pupil Premium funds for individual children are treated with discretion and in confidence.

For more information on the Pupil Premium, please visit:

www.education.gov.uk/schools/pupilsupport/premium

Date of next Pupil Premium Strategy Review: March 2020