

WHAT IS GOD LIKE?



FOCUS ON:

GOD IS COMPASSIONATE



MEMORY VERSE:

Psalm 86:15

But you, Lord, are compassionate and gracious.
Slow to anger, abounding in love and faithfulness.



QUESTION:

WHAT IS
COMPASSION?

It is when we see
something wrong, or
someone hurt and we
move to do something
about it.
Feeling + Action =
compassion.

WATCH:

[https://www.youtube.com/
watch?v=WOSadLyqshg](https://www.youtube.com/watch?v=WOSadLyqshg)

or search for
'Saddleback kids
Jonah and the Fish'



PRAYER:

Thank you for your compassion
for me. Give me ideas to be
compassionate to those
around me today. Amen.



CRAFT:

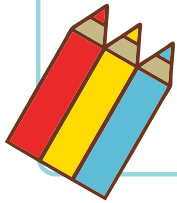


For the craft see page 2

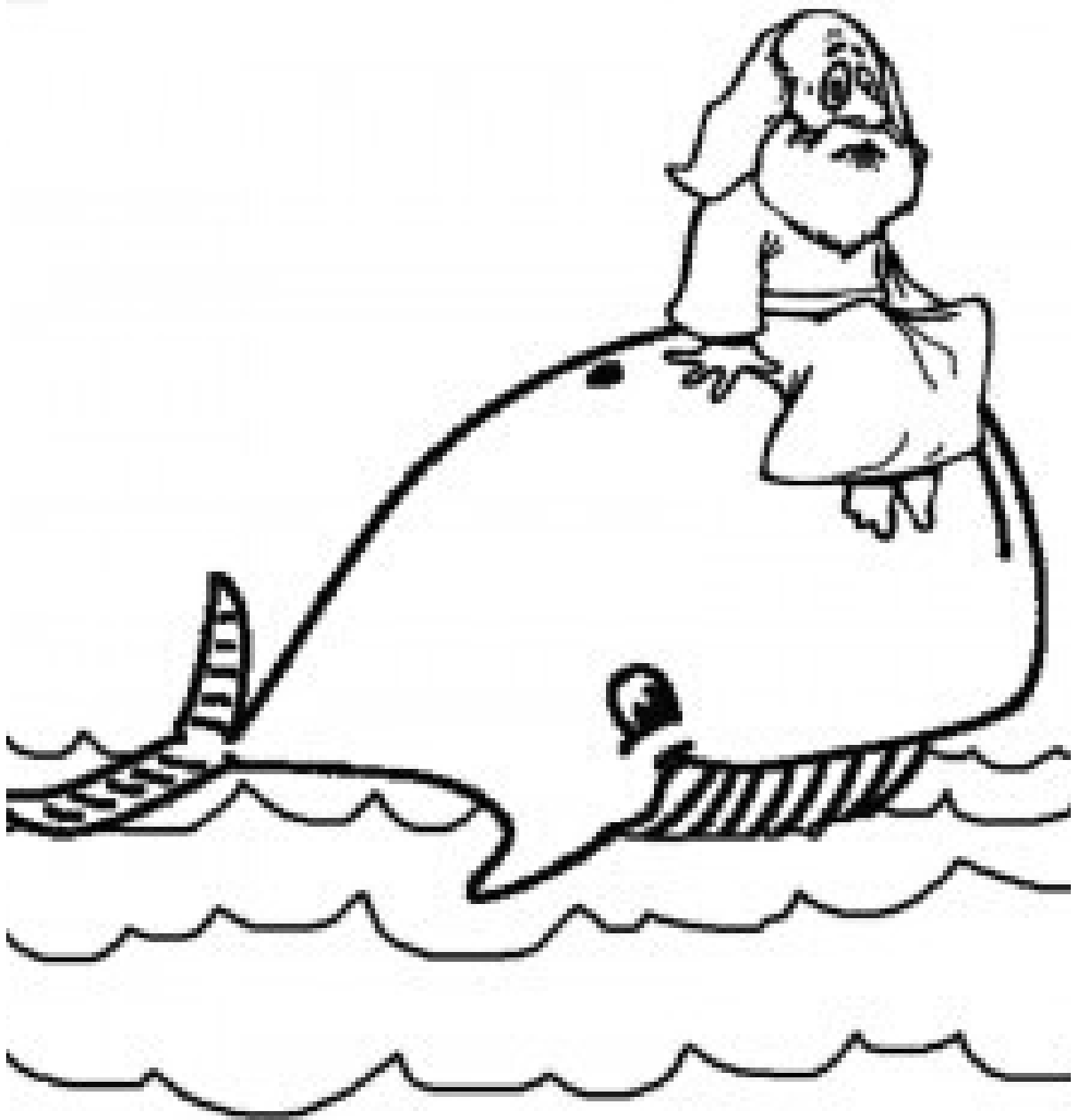
Created by



Taking Jesus to School



CRAFT: COLOUR THE PICTURE



But you, Lord, are compassionate and
gracious. Slow to anger, abounding in love
and faithfulness Psalm 86:15